

**INVEST IN** KOTKA HAMINA REGION 

# Kotka-Hamina Region

Gateway between Russia & Europe

FINLAND



Welcome to the Coast of Success!

# Location

- Optimal location by the Russian border
- Excellent connections to East and West by land, rail and sea
- 130 km from Helsinki-Vantaa international airport





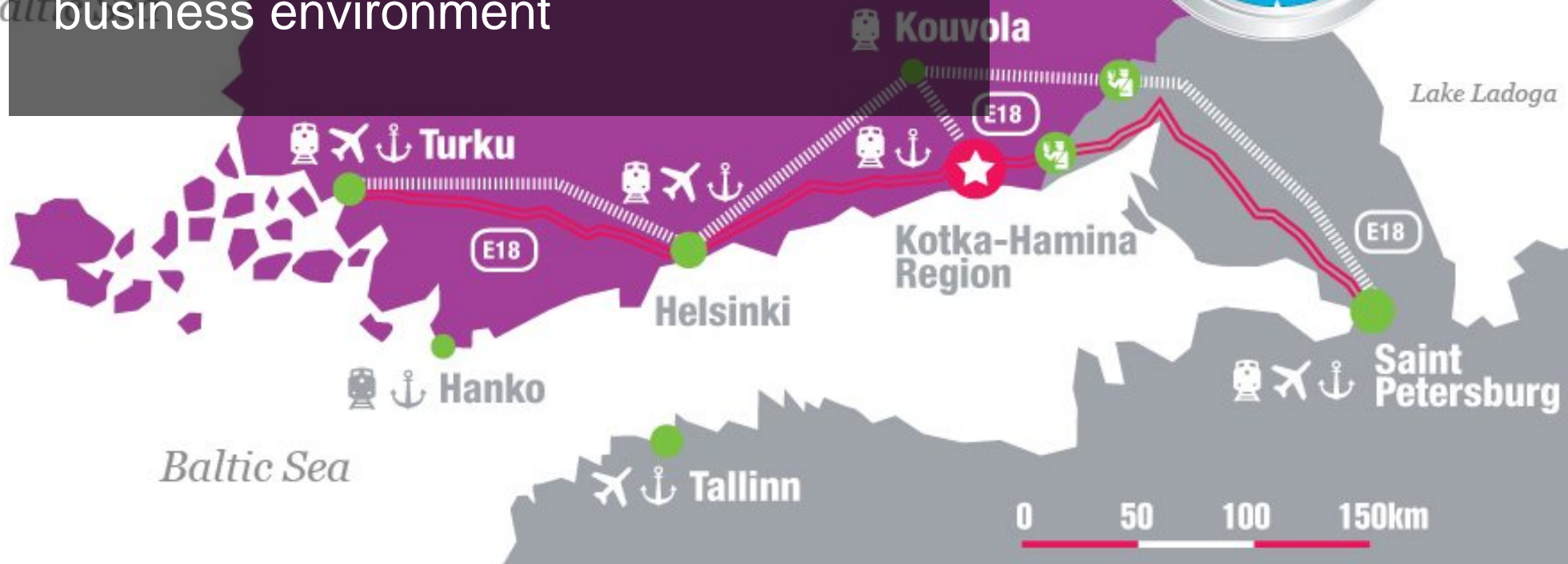
# Distances



# Logistics routes

- Excellent connections to Russia and Europe
- Reliable and cost effective logistics infrastructure
- Functioning and forward-looking business environment

*Baltic Sea*



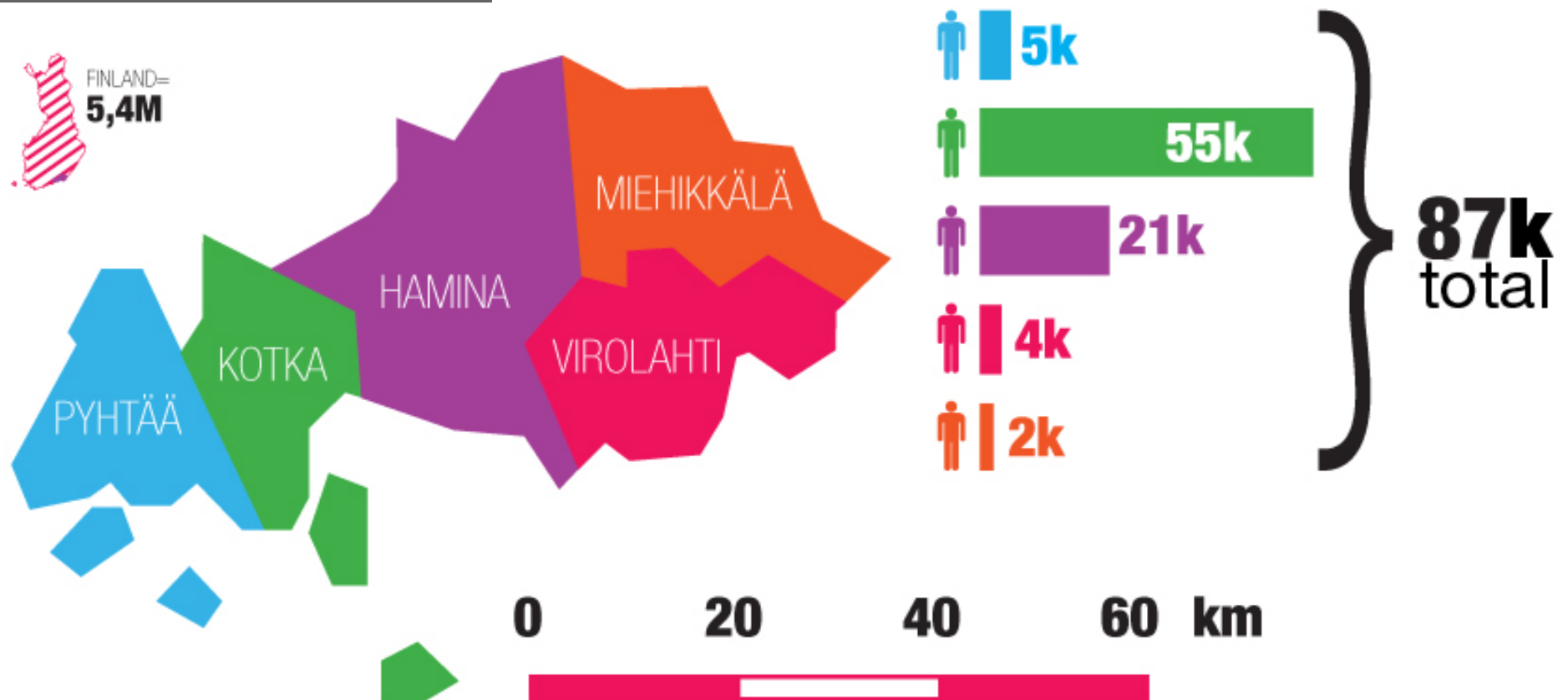
# Facts & figures

---

- Amount of private companies: 5700
- Amount of workforce: 33 000
- Corporate tax rate 20% from 2014



# Population





# Business Environment

---

- Bridge between EU and Russia
- Globally competitive industry clusters
- Strong industrial tradition and vision for the future



# Energy

---

- Moderate energy costs through energy-efficient construction and up-to-date systems
- Average electricity price 12,67 – 18,72 c/kWh incl. VAT
- 70% of energy is produced with renewable energy sources





# ICT Systems

---

- Fast, reliable telecommunications systems and networks available for the whole region
- Finland - 2nd of 44 countries in the ITIF innovation and competitiveness comparison // The Information Technology and Innovation Foundation ITIF, 2011



# Financing

---

- Stable financial environment and institutions, competitive financing services
- Finland - the 3rd most competitive country in the world // World Economic Forum, 2012



# Public services

---

- Versatile accurate societal services e.g. health care, hospitals, emergency services, social services, security
- Various free business services by public organizations





# Water & food supplies

---

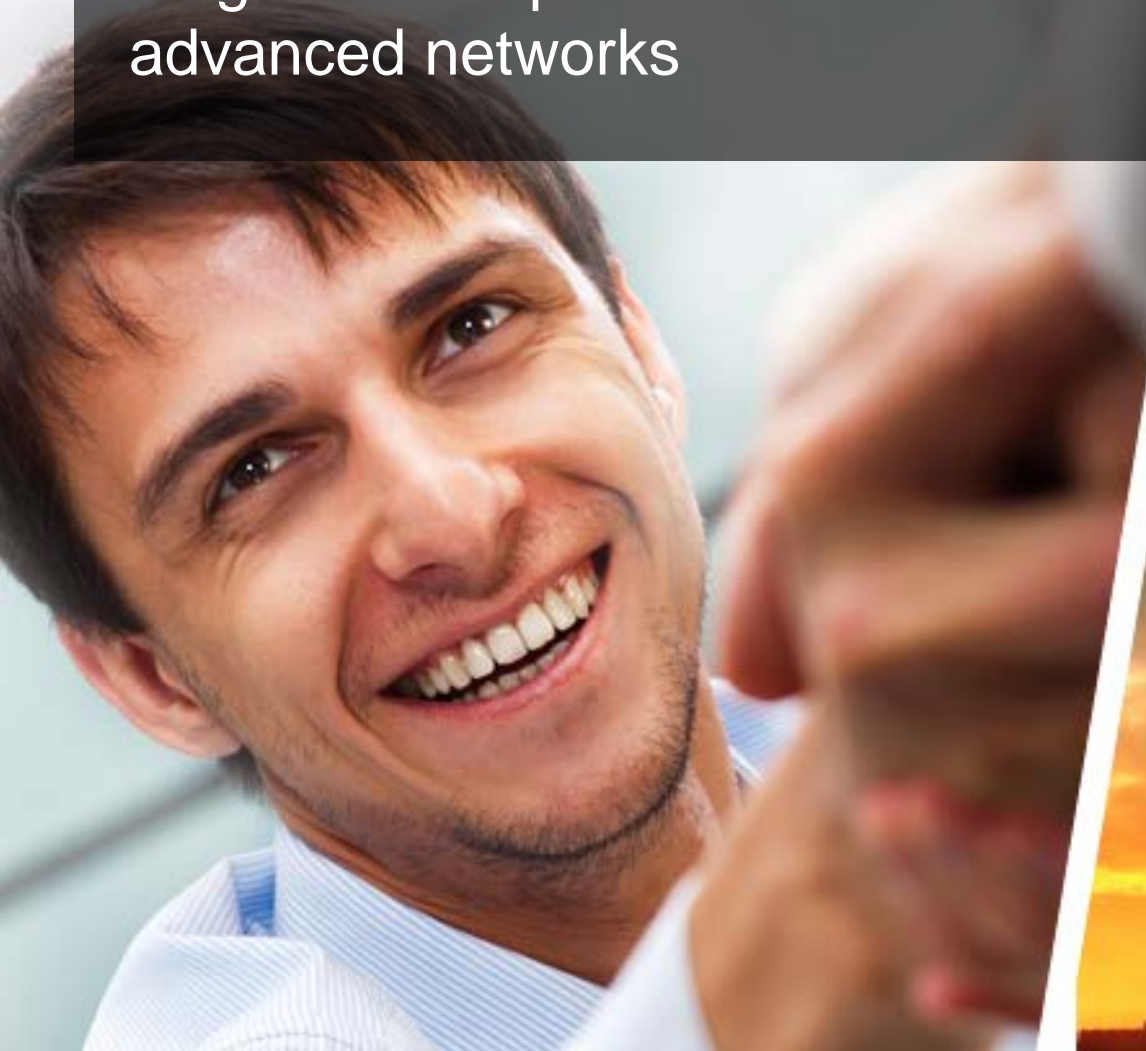
- Clean tap water, secure food production and inspection



# Competences

---

- Regional co-operation and advanced networks



# Excellent location

- Proximity of Helsinki and St. Petersburg



250km

130km



# We know Russia

- Long tradition and knowledge of Russian business
- Native Russian speaking work force available



# Functional logistics

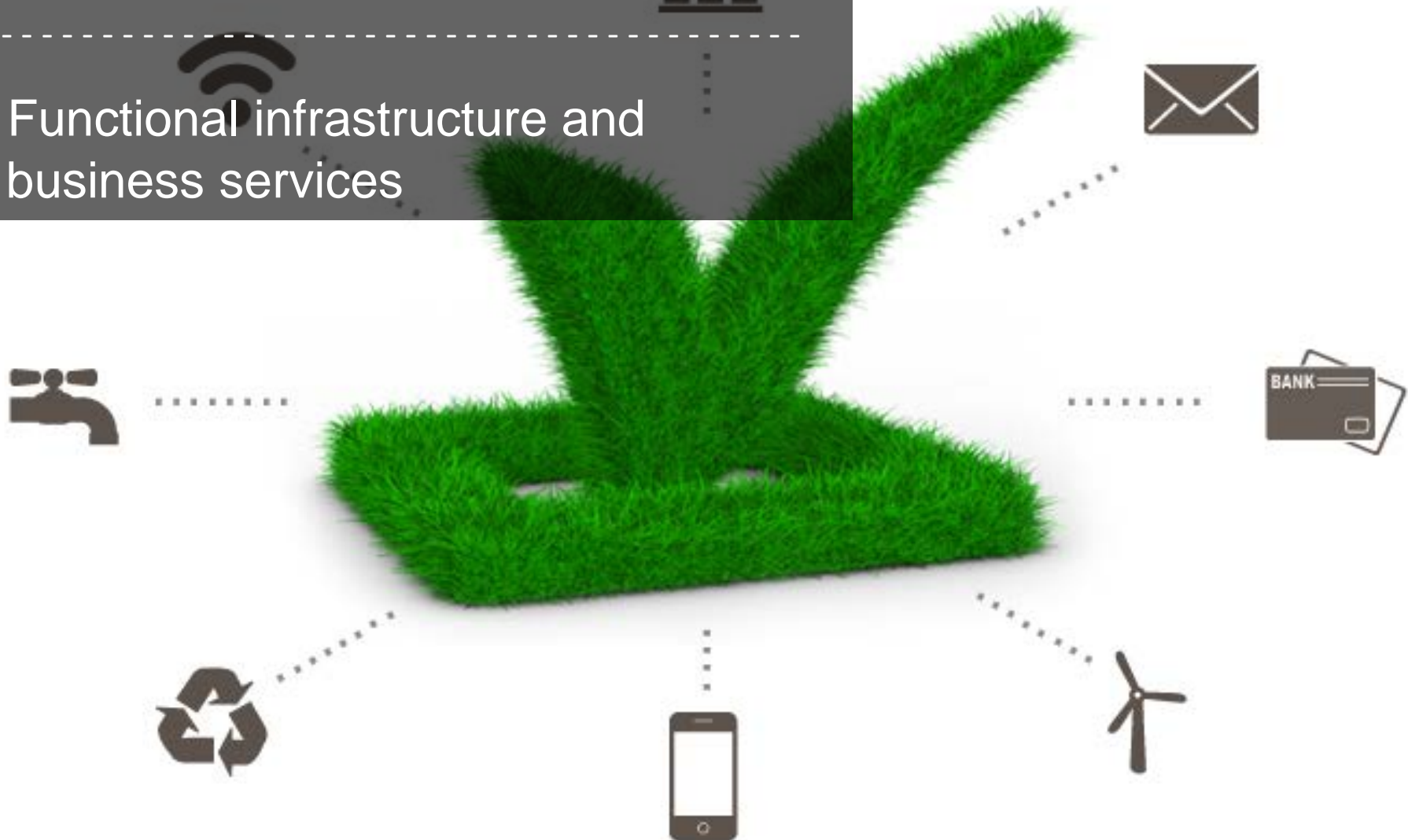
---

- Sea port, frontier station, E18 road and railway connection to Russia
- The Port of HaminaKotka is the biggest universal, export and transshipment port in Finland



# Infrastructure & services

- Functional infrastructure and business services

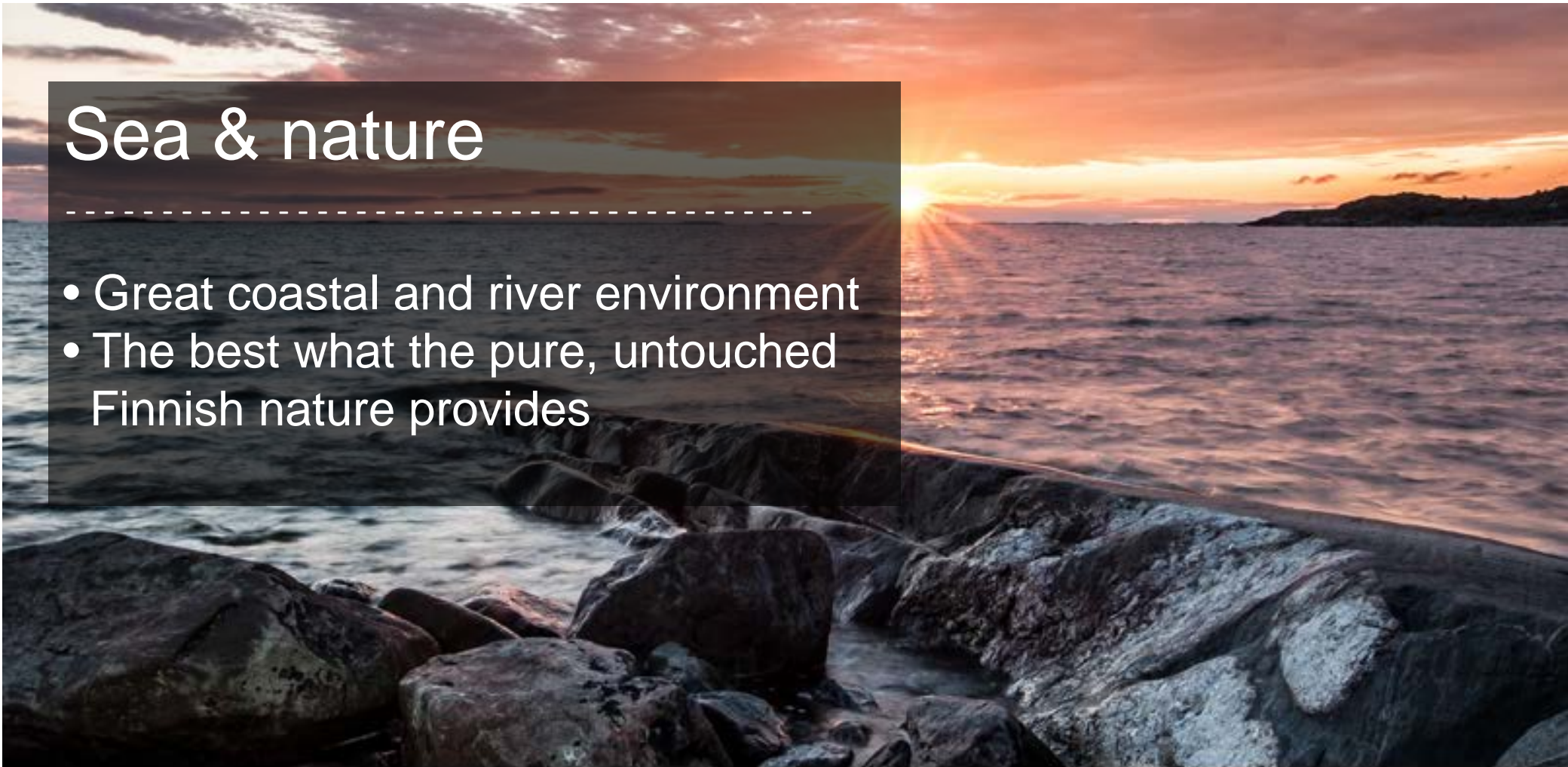




# Sea & nature

---

- Great coastal and river environment
- The best what the pure, untouched Finnish nature provides





# Why Finland?

---

"Finland - the 2nd happiest country in the world" // United Nations survey, 2012

"Finland - the least corrupt country in the world" // Transparency International, 2012

"Finland - the best country in the world" // Newsweek, 2010



# References

---

- 400 new companies founded each year
- Annual total revenue of private businesses €5 billion in 2011



Google



*Kotka*  
YACHT STORE

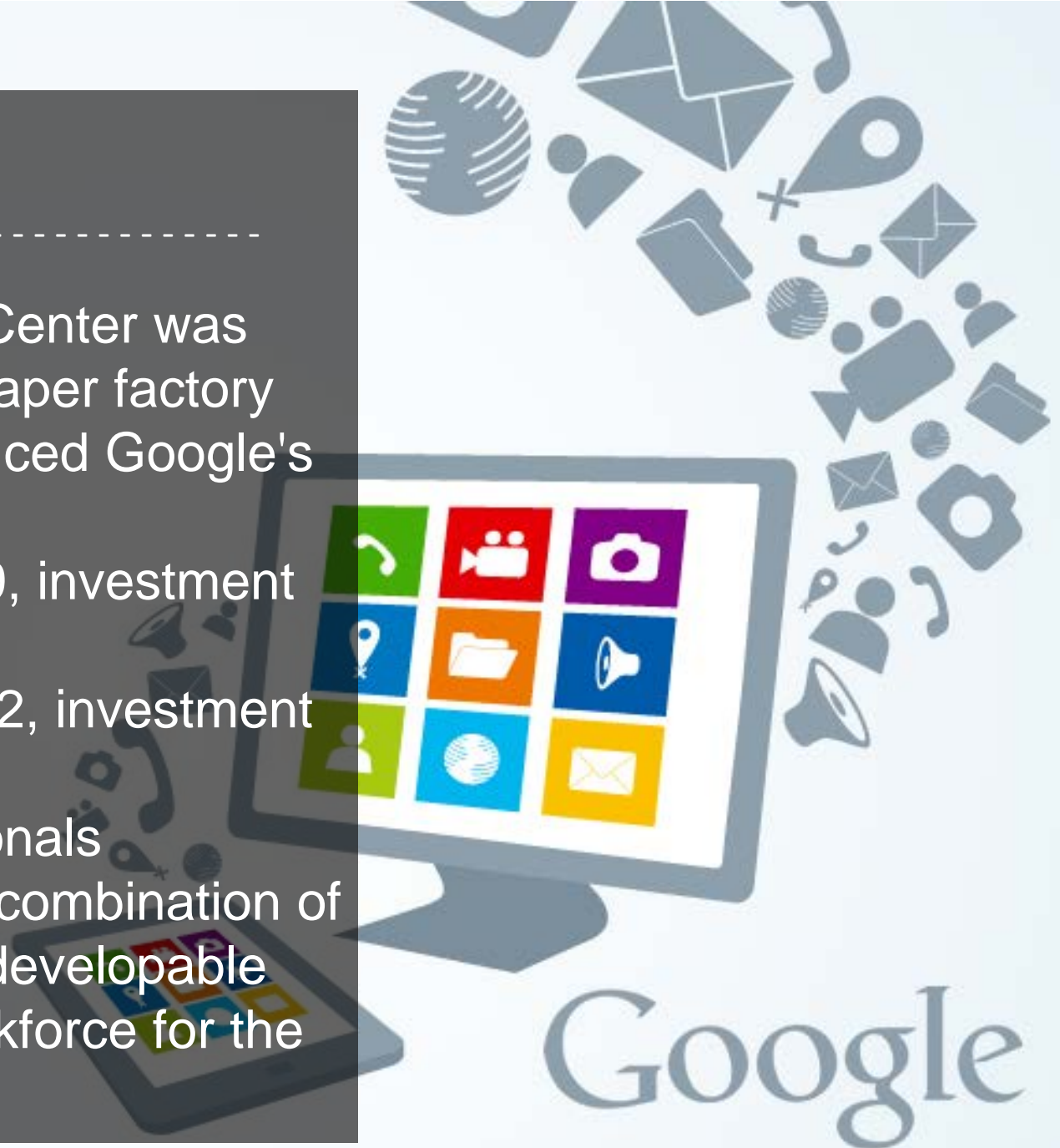




# Google

---

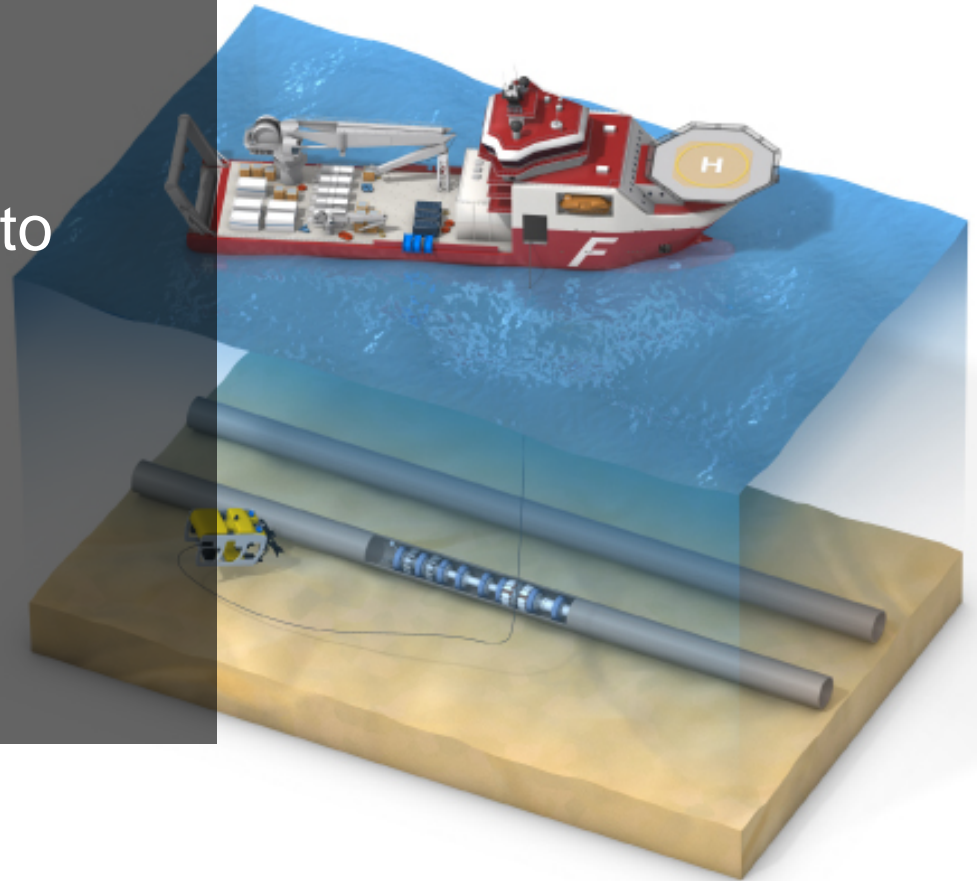
- Google Hamina Data Center was established in an old paper factory
- One of the most advanced Google's data centers
- 1st phase started 2009, investment 200M€
- 2nd phase started 2012, investment 150M€
- Employs 100 professionals
- "Hamina had the right combination of energy infrastructure, developable land and available workforce for the data center"



# Nord Stream

---

- A natural gas pipeline system through the Baltic Sea
- Transporting gas from Russia to Europe
- Eupec factory for gas pipeline element coating and logistic operations in Kotka
- Started in 2010
- Investment: 45 M€



**Nord Stream**  
The new gas supply route for Europe



# Kotka Yacht Store

---

- The leading company in maintaining and servicing large pleasure boats in the Baltic Sea
- Full service, secure maintenance for yachts from 50 to 150 feet
- Founded in 2011





# Live & work

---

- Natural and safe residential areas
- Over 100 km of shoreline
- 6 islands with public boat transportation
- Close to the peace and quiet of the countryside, close to the city lights
- Good business opportunities
- Good traffic connections to e.g. Helsinki and St. Petersburg
- Affordable residential costs
- Average price of dwellings 1200-1400 €/m<sup>2</sup>



# Clusters

-----

Strategic industry sectors  
in the region:

-----

- Logistics
- Game cluster
- Renewable energy
- Tourism

## LOGISTICS



## GAME CLUSTER



## TOURISM



## RENEWABLE ENERGY



# Logistics

---

## Transport by road

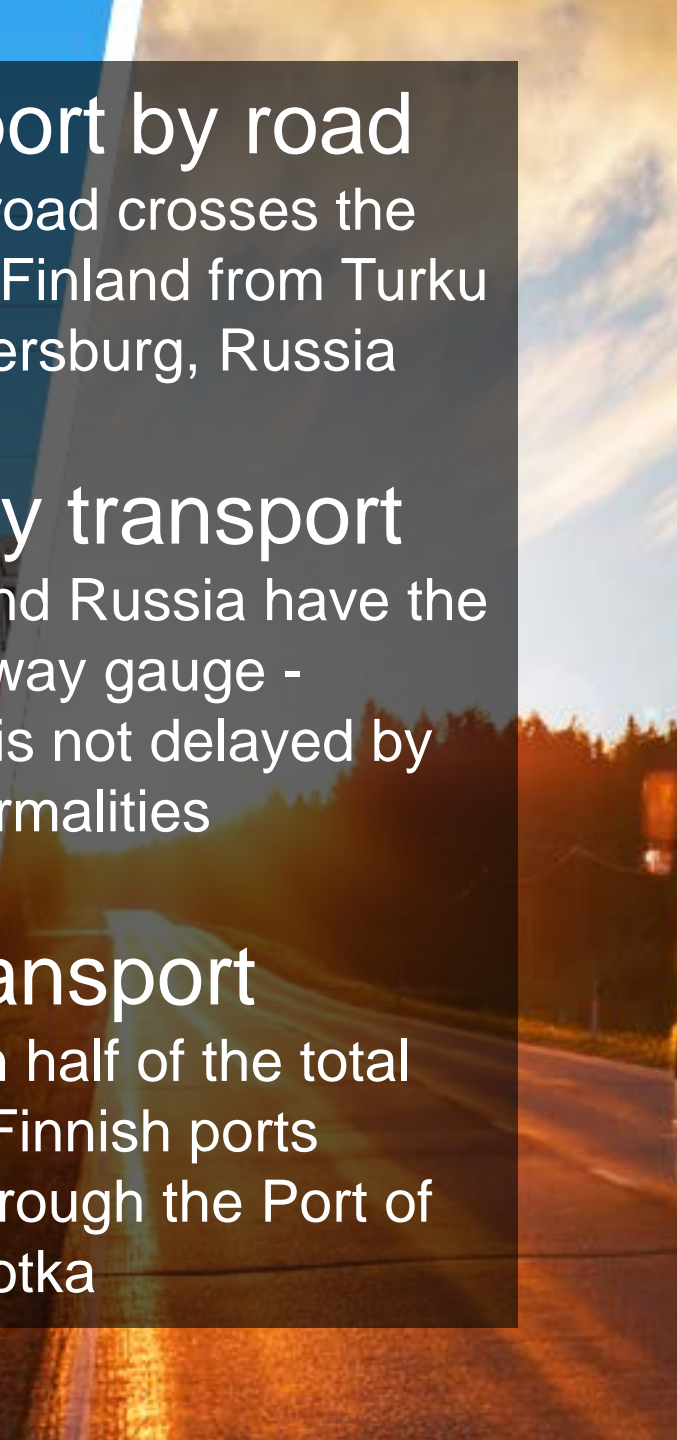
The E18 road crosses the Southern Finland from Turku to St. Petersburg, Russia

## Railway transport

Finland and Russia have the same railway gauge - transport is not delayed by frontier formalities

## Sea transport

More than half of the total transit in Finnish ports passes through the Port of HaminaKotka





# Game cluster

---

- Strong and growing community of digital games design and production
- One of the spearhead industries in the region's strategy
- Employs over 100 highly educated ICT and creative personnel
- Special Playa Game Industry Hub gathers game industry players in the region



# Tourism

---

- Total 170 000 nights spent in the region's accommodation facilities in 2012
- One of Finland's most rapidly growing destinations for Russian tourists
- Growth of Russian overnight stays 30% in 2012
- Over 500 000 annual border crossings at Vaalimaa border control
- Tax free sales in 2012 about 15 M€ with a 25% growth rate
- 50% increase in tourism euros between 2011 and 2020

**+50%**  
**by 2020**





# Renewable energy

---

- One of the key strategic industries in the region
- Advanced design, manufacturing and maintenance know-how of renewable energy technology systems
- Currently 70% of energy is produced with renewable sources, mainly biomass, hydropower and wind turbines
- By 2016 200 new wind turbines in operation
- Currently employs 1500 energy technology professionals, 50% increase estimated by 2016

**+50%**  
**by 2016**



# How can we help?

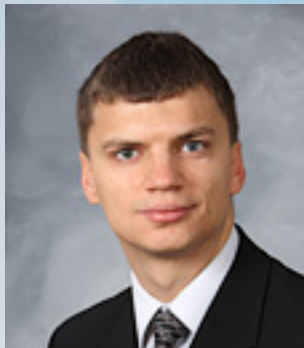
---

- Set-up support
- Introduction to financing opportunities
- Easy access to office and other premises
- Introduction to HR market
- Information & promotion channel
- Access to business networks
- Consultancy services

SERVICES



# At your service



**Sergey Troshkov**  
*Programme Manager*  
+358 40 190 2561  
sergey.troshkov@cursor.fi



**Marianne Ahvenranta**  
*Project expert*  
+358 40 190 2568  
marianne.ahvenranta@cursor.fi



**Anastasija Karpova**  
*Project Assistant*  
+358 40 190 2576  
anastasija.karpova@cursor.fi